



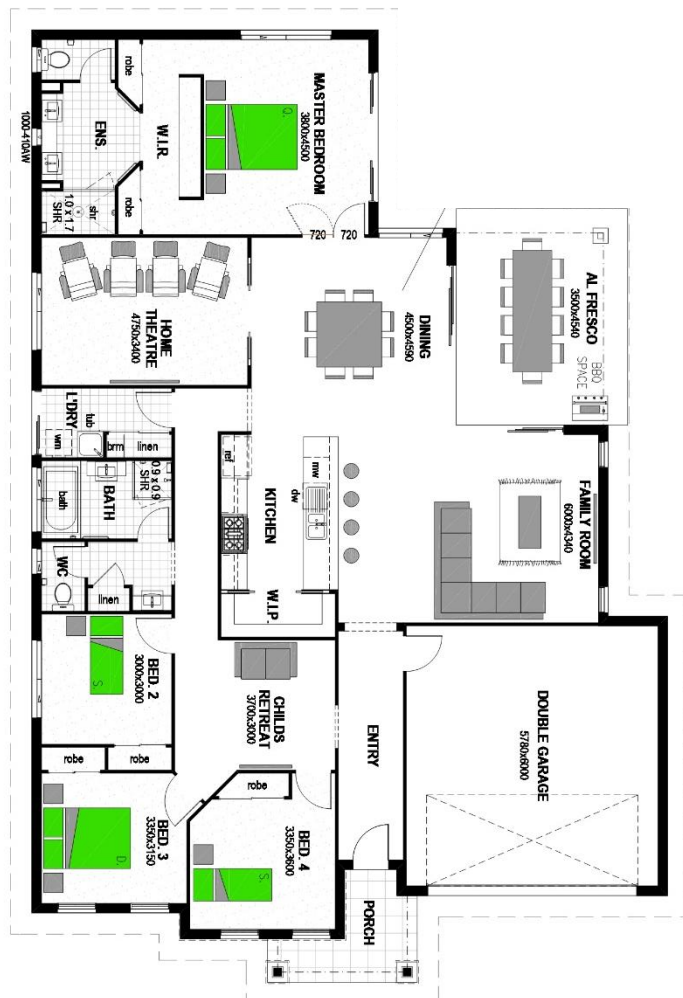
**WILDFLOWER 256 - ALPINE FAÇADE** **\$673,605** **Lot 62 - 6215m<sup>2</sup>**

*Over 95* Fully Loaded Inclusions

Includes the following plus more!!

- H1 Class Slab with Site Works to 2000mm + BAL 12.5
- 20mm Caesarstone bench tops throughout
- Carpet from the builders' range with 10mm underlay
- 450mm tiles from Tile City throughout
- 90mm LED Clipsal downlights inside & out as per electrical plan
- Brushed Concrete Driveway (60m<sup>2</sup>)
- BlueScope Colorbond roof, gutters and fascia
- Dynamic Colorbond Remote Control Panel Lift Garage Door
- Security screens to all sliding doors & flyscreens to all windows
- Aluminium door tracks to alfresco doors
- TV antenna, Clothesline and letterbox
- T2 treated frames & trusses + physical barrier perimeter termite protection
- 540mm x 340mm tiled shower niches to bathrooms
- Wattle 3 coat paint system
- Mizu taps and full bathroom accessories
- Solus ceramic soft close back to wall toilets
- All fees, applications and insurance
- Personalised Interior Design Service
- HSTP supplied and installed
- Full pressure town water
- Independent handover inspection

\*Listed price provisional sum only pending preliminary testing.



**PETE WOOLGAR**

Stroud Homes Lockyer Valley

New Home Sales

0447 787 683

pete.woolgar@stroudhomes.com.au

