

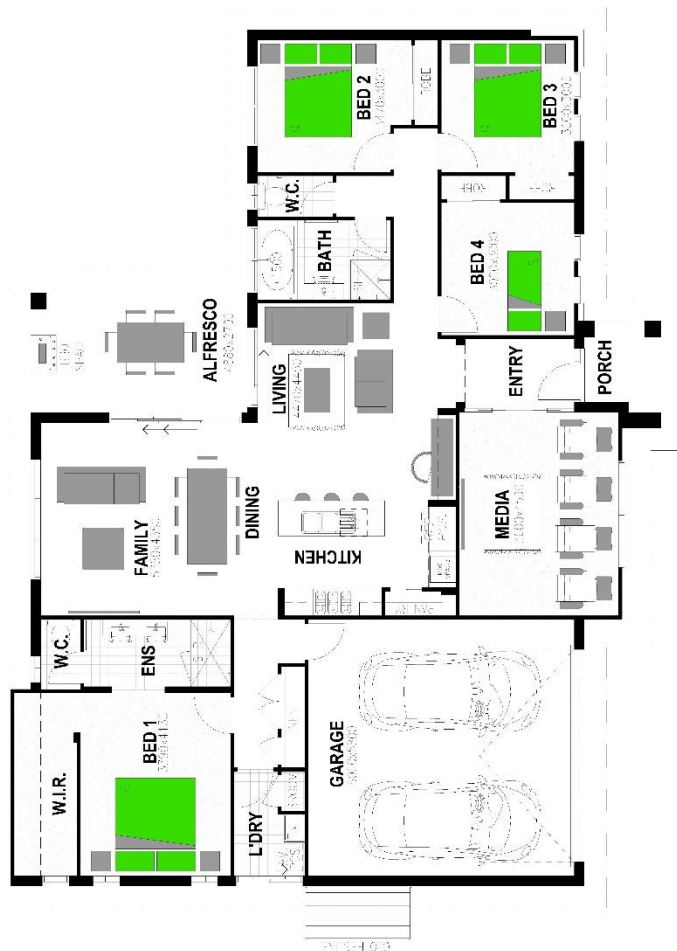


**BEECHMONT 220 - COAST FAÇADE** **\$583,025** Lot 119 - 4299m2

*Over 95* Fully Loaded Inclusions

Includes the following plus more!!

- H1 Class Slab with Site Works to 2000mm
- 20mm Caesarstone bench tops throughout
- Carpet from the builders' range with 10mm underlay
- 450mm tiles from Tile City throughout
- 90mm LED Clipsal downlights inside & out as per electrical plan
- Brushed Concrete Driveway (60m2)
- BlueScope Colorbond roof, gutters and fascia
- Dynamic Colorbond Remote Control Panel Lift Garage Door
- Security screens to all sliding doors & flyscreens to all windows
- Aluminium door tracks to alfresco doors
- TV antenna, Clothesline and letterbox
- T2 treated frames & trusses + physical barrier perimeter termite protection
- 540mm x 340mm tiled shower niches to bathrooms
- Watty! 3 coat paint system
- Mizu taps and full bathroom accessories
- Solus ceramic soft close back to wall toilets
- All fees, applications and insurance
- Personalised Interior Design Service
- HSTP supplied and installed
- Full pressure town water
- Independent handover inspection



\*Listed price provisional sum only pending preliminary testing.



**PETE WOOLGAR**  
 Stroud Homes Lockyer Valley  
 New Home Sales  
 0447 787 683  
 pete.woolgar@stroudhomes.com.au

